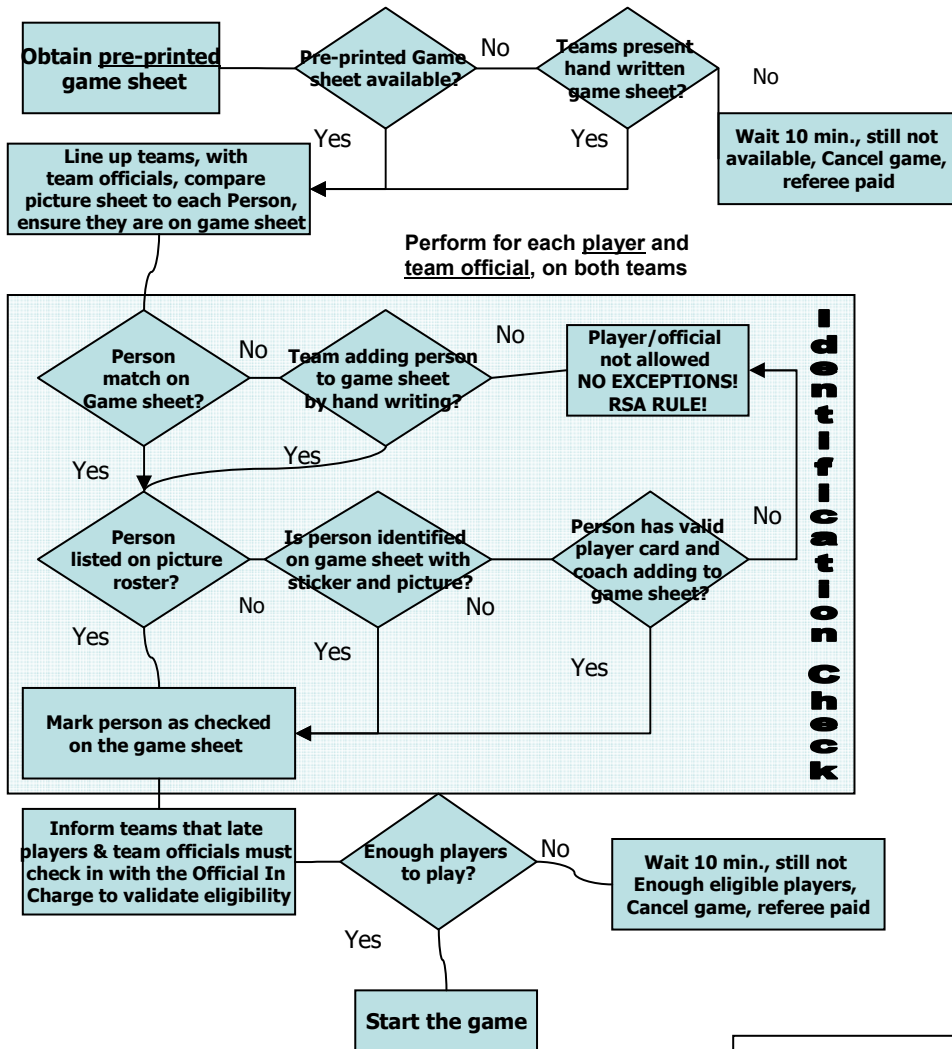


# Before start of game ALL LEAGUES

## U10 through Adult



## During the game

RSA members with the proper identification who arrive after the game has begun are allowed to enter the game **only after being accepted by the Official in Charge.**

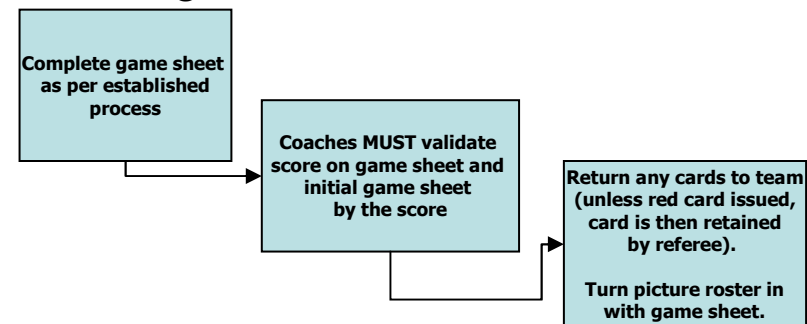
The Official in Charge will determine when it is suitable to allow entry into the game.

This will be at a convenient stoppage in play and only at the discretion of the Official.

**After authorization by the Official in Charge,** the Player or team official is eligible to participate and may enter under the standard substitution rules for their division.

*Note: As the Official in Charge, be sure the identity is verified to the game sheet and picture roster, and the person is marked on the game sheet. This can be done during the game with no extra time being added, or later at the discretion of the Official in Charge. Take the time necessary to comply with the procedures!*

## After the game



Regina Soccer Referees' Association  
**Outdoor Season Player Identification Procedure (MANDATORY), May 2010**  
 Required by and Approved by Regina Soccer

May 2010

- Notes:
- 1) Affiliated Guest Players will have their information hand written on the game sheet and **must have** a player card
  - 2) Non Affiliated Guest Players will have their information on a sticker attached to game sheet, but no player card
  - 3) NO temporary or alternate identification is valid for presentation (i.e. NO DRIVERS LICENSES!!)
  - 4) Time required to do checks is taken off of the game, no extra time is added.
  - 5) Do not accept incomplete game sheets, have team officials complete them!!
  - 6) **If NO picture roster provided, ALL players and officials must have a valid player card!**